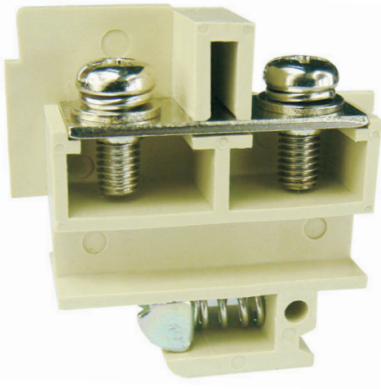


Barrier screw terminal block-
JF5-6L-051023





Barrier screw terminal block , rated voltage:660V ,
Max. operating current:41A, connection
method : screw connection , number of
connections : 2 , crimping range : 2.5mm² -4m
m² -6mm² , AWG : 14-12-10 , thickness : 14
mm , height:41.5mm , color : Beige , mounting
type : TH35-7.5、 TH35-15、 G32-15、 G32-18

Product parameter

Parameter	Data
Packing unit (PCS)	/
NW per piece(g)	/
Layers	1
Number of connections	2
Rated cross section(mm ²)	6
Color	Beige
Insulation material	PA
Flame retardant grade (UL94)	V0
Rated voltage(V)	660
Rated current(A)	41
Temperature of insulation material	-40 ~ +125
Wire feed	Terminal side

Product certification

Parameter	Data
Certification logo	
Certification logo	

Technical data

Parameter	Data
Connection Method	Screw connection
Screw thread	M5
Stripping length(mm)	10
Tightening torque	2
Solid conductors(mm ²)	2.5-4-6
Solid conductors AWG	14-12-10
Stranded conductors(mm ²)	2.5-4-6
Stranded conductors AWG	14-12-10
Operating temperature ()	-40 ~ +105
Ambient temperature (storage/transportation) ()	-25 ~ +60
Relative humidity	30% ~ 90%
Connection in acc. with standard	IEC 60947-7-1

Dimension

Parameter	Data
Width(mm)	45
Thickness(mm)	14
Height(mm)	41.5