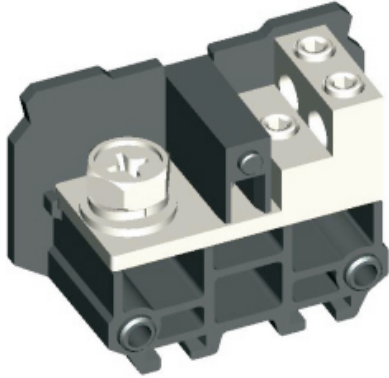


Barrier screw terminal block-  
UTD-150I / 3 × 16-391316





Barrier screw terminal block , rated voltage:660V ,  
Max. operating current:175A, connection  
method : screw connection , number of  
connections : 4 , crimping  
range : 22mm<sup>2</sup> -60mm<sup>2</sup> , AWG : 4-1/0 , thick  
ness : 27 × Nmm , height:45mm , color : Black  
, mounting  
type : TH35-7.5、 TH35-15、 G32-15、 G32-18

## Product parameter

Parameter	Data
Packing unit (PCS)	/
NW per piece(g)	/
Layers	1
Number of connections	4
Rated cross section(mm <sup>2</sup> )	60
Color	black
Insulation material	PA
Flame retardant grade ( UL94 )	V0
Rated voltage(V)	660
Rated current(A)	175
Temperature of insulation material	-40 ~ +125
Wire feed	Terminal side

## Product certification

Parameter	Data
Certification logo	
Certification logo	

## Technical data

Parameter	Data
Connection Method	Screw connection
Screw thread	M8 × 14 ( Cross-groove bolts )
Stripping length(mm)	/
Tightening torque	8-10
Solid conductors(mm <sup>2</sup> )	22-60
Solid conductors AWG	4-1/0
Stranded conductors(mm <sup>2</sup> )	4-1/0
Stranded conductors AWG	4-1/0
Operating temperature ( )	-40 ~ +105
Ambient temperature (storage/transportation) ( )	-25 ~ +60
Relative humidity	30% ~ 90%
Connection in acc. with standard	IEC 60947-7-1

## Dimension

Parameter	Data
Width(mm)	72
Thickness(mm)	27 × N
Height(mm)	45