



TECHNICAL MANUAL

Enclosed direct-on-line
starter KME with thermal
overload relay
and indication IP65 EKF

1 DESCRIPTION

Enclosed direct-on-line starters with indication KME comprise contactor, thermal overload relay and control buttons mounted in a sealed IP65 housing. The starters are designed for remote start (by directly connecting the load to the power supply) and stop of three-phase squirrel-cage asynchronous electric motors up to 415 V AC, and for protection of motors against a prolonged overload or overcurrent caused by phase loss fault. KME 9A – KME 32A contactors feature a plastic housing, while KME 40A – KME 95A models have a metal housing.. Degree of protection: IP65.

The LEDs on the front panel indicate the starter ON or OFF status.

Starters KME comply with IEC 60947-4-1.

2 TECHNICAL DATA

Main technical data are listed in table 1.

Table 1

Characteristics		KME 9A	KME 12A	KME 18A	KME 25A	KME 32A	KME 40A	KME 50A	KME 65A	KME 80A	KME 95A
Rated voltage, V		220/230/240/380/400/415									
Frequency fn, Hz		50/60									
Rated operating current, A	[AC-1]	25	27	32	43	55	60	100	115	133	145
	[AC-3]	9	12	18	25	32	40	50	65	80	95
Rated power [AC-3], kW		4	5,5	7,5	11	15	18,5	22	30	37	45
Mechanical endurance, mln. cycles		2	2	2	2	2	2	1,5	1,5	1,5	1,5
Electrical endurance [AC-3], mln. cycles		1,7	1,7	1,4	1,4	1,6	1,5	1,4	1,4	1,2	0,9
Maximum switching frequency without/with load, per hour		1200/1200									
Rated voltage of control coil Uc, V		230-240; 400-415									
Auxiliary contacts		1NO					1NO+1NC				
Thermal overload relay type		RTE-1314	RTE-1316	RTE-1321	RTE-1322	RTE-2353	RTE-2355	RTE-2357	RTE-2359	RTE-3363	RTE-3365
Weight, kg		0,85	0,85	0,90	1,25	1,30	3,83	3,83	4,00	4,17	4,33
Degree of protection		IP65									

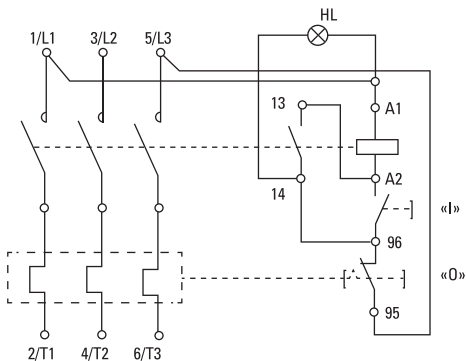


Fig. 1 - Wiring diagram of KME 9-32 A 380-415 V

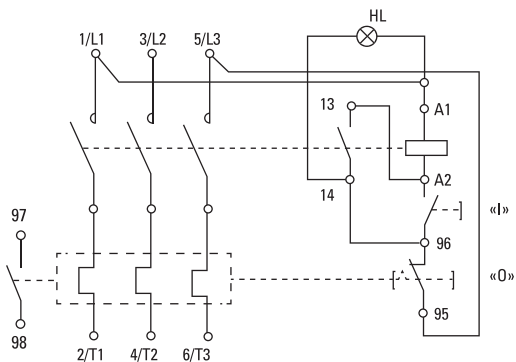


Fig. 2 - Wiring diagram of KME 40-95 A 380-415 V

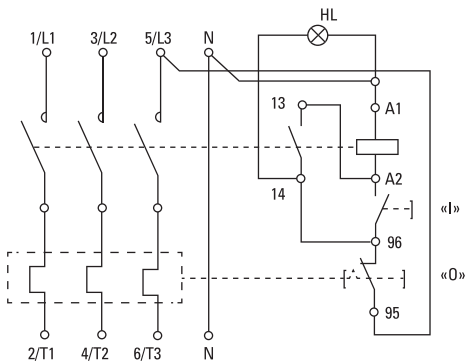


Fig. 3 - Wiring diagram of KME 9-32 A 220-240 V

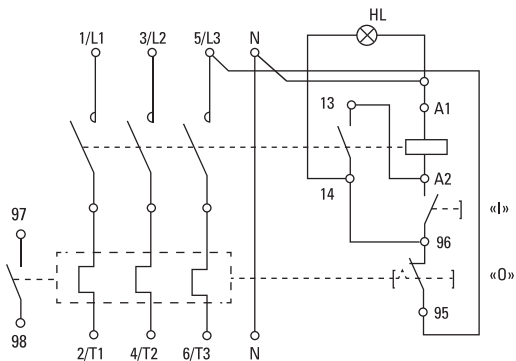


Fig. 4 - Wiring diagram of KME 40-95 A 220-240 V

3 OVERALL DIMENSIONS

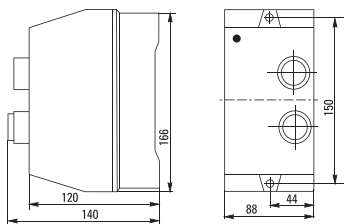


Fig. 5 - Overall dimensions of KME 9-18A

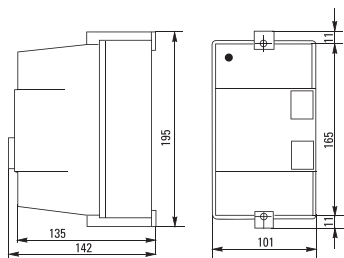


Fig. 6 - Overall dimensions of KME 25-32A

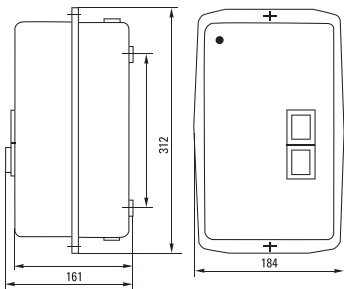


Fig. 7 - Overall dimensions of KME 40-95A

4 INSTALLATION AND OPERATION

Position in space: vertical on vertical plane with inclination tolerance of $\pm 30^\circ$.

The starters shall be installed and connected by qualified electrical personnel.

Copper and aluminum wire connections are supported. Do not connect copper and aluminum wires to one terminal concurrently.

Operation conditions: ambient temperature: from -30°C to $+60^\circ\text{C}$; non-explosive and non-aggressive environment.

5 DELIVERY SCOPE

Starters are supplied in one individual package. For all available documentation, scan the QR-code on the insert or on the inside of the package.

6 SAFETY REQUIREMENTS

The starters shall be repaired and serviced by qualified electrical personnel.

WARNING! Make sure the power is off before installation, connection and commissioning!

Do not operate starters with visible mechanical damage.

7 MAINTENANCE

For maintenance, follow national safety rules for operation of electrical Installations.

Under normal operating conditions, visually inspect the starters every 6 months.

8 TRANSPORTATION AND STORAGE

The starters can be transported by any means of enclosed transport that ensures protection of packed products from mechanical impacts and weather exposure.

The starters shall be stored in the original package indoors at the ambient temperature from -40°C to 70°C and relative humidity of max. 98% at $+25^\circ\text{C}$.

9 MANUFACTURER'S WARRANTY

Warranty period: 7 years from the date of sale specified in the sales receipt.

Shelf life: 7 years from the date of manufacture specified on the product package or housing.

Service life: 10 years.

Manufacturer: 000 Electroresheniya, Otradnaya st., 2b/9, 127273, Moscow, Russia, tel. +7 (495) 788-88-15.

MEA regional headquarters: EKF ELECTRICAL SOLUTION FZCO, Office 249, Techno Hub-2, Dubai Silicon Oasis, P.O. box 341079, Dubai, United Arab Emirates, tel. +971-4-547-06-18.

Importer and EKF trademark service representative on the territory of the Republic of Kazakhstan: TOO «Energoresheniya Kazakhstan», Kazakhstan, Almaty, Bostandyk district, Turgut Ozal st., 247, apt 4.

10 DISPOSAL

Life-expired and failed starters shall be disposed of in compliance with the national and local laws and regulations in force. To dispose of the product, send it to an authorized company for recycling in compliance with the national and local laws and regulations in force.

11 CERTIFICATE OF ACCEPTANCE

The starter has been approved for operation.

Date of manufacture:

For information, refer to the product package.

Technical control stamp

EAC



v3

ekfgroup.com

