



TECHNICAL MANUAL

Fuse-disconnectors DF EKF (for cylindrical fuse links)

1 DESCRIPTION

Fuse disconnectors DF EKF are designed for fuse link installation and circuit protection against short circuit and overload.

Fuse disconnectors are compatible with cylindrical fuse links (and similar in design fuses); for sizes and rated currents, refer to Table 1.

The fuse link is a part of the fuse disconnector with a fuse, to be replaced after tripping.

If overload or short-circuit currents exceed thresholds, the fuse link blows out and the LED on the fuse disconnector lights up.

Fuse-disconnectors comply with IEC 60947-3.

2 TECHNICAL DATA

The main technical data are listed in Table 1.

Table 1

Characteristics	Values		
	10x38	14x51	22x58
Rated frequency, Hz	50 / 60		
Poles	1; 2; 3; 4		
Rated current I_n , A (500V AC/ 690V AC)	0,5-16 / 0,5-10	2-32 / 2-25	2-63 / 2-50
Weight, g (1 pole)	50	83	170
Size of fuse link	10x38	14x51	22x58
Maximum power dissipation, W (gG/aM)	3/1,2	5/3	9,5/7
Mechanical endurance, cycles	2000	2000	1600
Degree of protection as per IEC 60529	IP20		

3 OVERALL DIMENSIONS

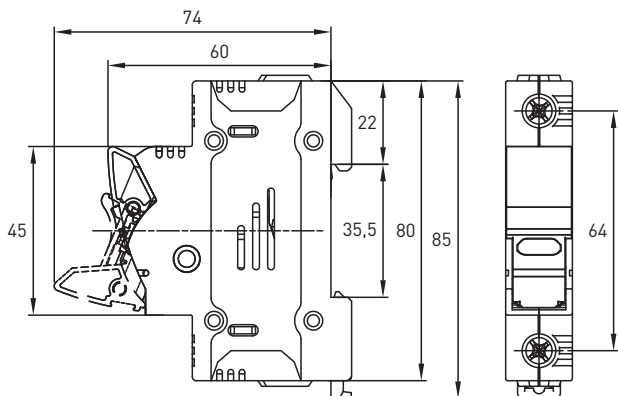


Fig. 1 - 10x38 model overall dimensions

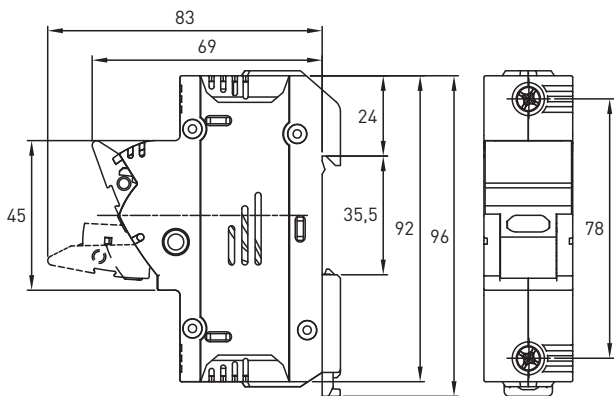


Fig. 2 - 14x51 model overall dimensions

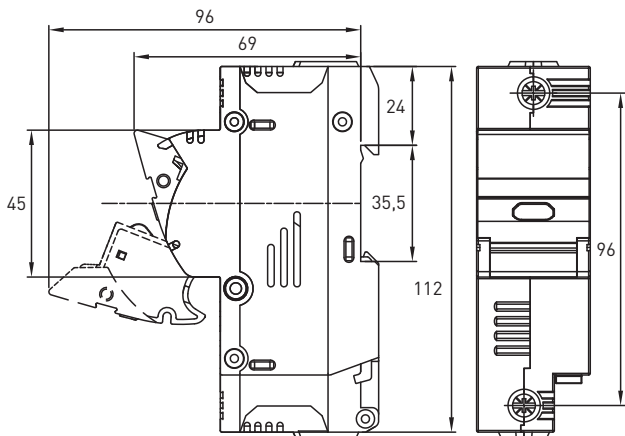


Fig. 3 - 22x58 model overall dimensions

4 DESIGN AND OPERATION

Fuse disconnectors ensure visible circuit break.

Fuse disconnectors are installed onto a DIN rail. For wiring diagram, refer to Figure 4.

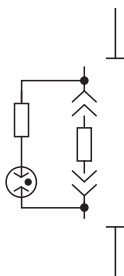


Fig. 4 - Fuse disconnector wiring diagram

Fuse disconnectors and fuse links must be installed and connected by qualified electrical personnel.

For Installation of fuse links, refer to Figure 5.

The LED on the front panel lights up, when the fuse link blows out.

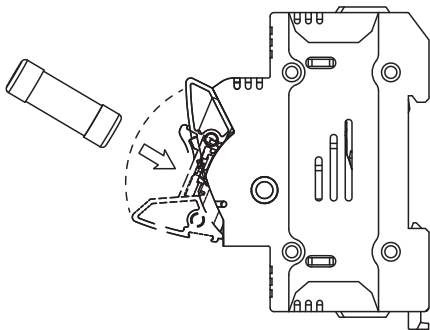


Fig. 5 - Installation of fuse links into disconnecter

Fuse disconnectors must be used only with fuse links.

5 DELIVERY SCOPE

Fuse disconnectors are supplied in a group package. For all available documentation, scan the QR-code on the insert or on the inside of the package.

6 SAFETY REQUIREMENTS

Fuse disconnectors must be repaired and serviced by qualified electrical personnel.

Do not operate fuse disconnectors with visible mechanical damage.

Disconnect power before installing or replacing the switch disconnector.

7 MAINTENANCE

For maintenance, follow national safety rules for operation of electrical Installations.

8 TRANSPORTATION AND STORAGE

Fuse disconnectors can be transported by any means of enclosed transport that ensures protection of packed products from mechanical impacts and weather exposure.

Fuse disconnectors shall be stored indoors in the original package at the ambient temperature from -40 °C to 50 °C and relative humidity of max. 75% at 15°C.

9 DISPOSAL

Life-expired and failed fuse disconnectors shall be disposed of in compliance with the effective national and local laws and regulations.

To dispose of the product, send it to an authorized company for recycling in compliance with the effective national and local laws and regulations.

10 MANUFACTURER'S WARRANTY

Warranty period: 7 years from the date of sale specified in the sales receipt.

Shelf life: 7 years from the date of manufacture specified on the product package or housing.

Service life: 10 years.

Manufacturer: OOO Elektroresheniya, Otradnaya st., 2b/9, 127273, Moscow, Russia, tel. +7 (495) 788-88-15.

MEA regional headquarters:

EKF ELECTRICAL SOLUTION FZCO, Techno Hub-2, DSO, P.O. box 341079, Dubai, United Arab Emirates, tel. +971-4-547-06-18.

Importer and EKF trademark service representative in the territory of the Republic of Kazakhstan: TOO «Energoresheniya Kazakhstan», Kazakhstan, Almaty, Bostandyk district, Turgut Ozal st., 247, apt 4.

11 CERTIFICATE OF ACCEPTANCE

The fuse disconnectors DF EKF comply with IEC 60947-3 and have been approved for operation.

Date of manufacture: for information, refer to the product packaging.

Quality control stamp

EAC

v3



ekfgroup.com

