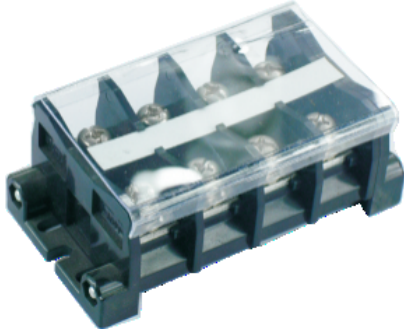


Barrier screw terminal block-  
UTD-63 / 2P- 391136







Barrier screw terminal block , rated voltage:660V ,  
Max. operating current:90A, connection  
method : screw connection , number of  
connections : 8 , crimping  
range : 5.5mm<sup>2</sup> -22mm<sup>2</sup> , AWG : 10-4 , thic  
kness : 63mm , height:41mm , color : Black , m  
ounting  
type : TH35-7.5、 TH35-15、 G32-15、 G32-18

## Product parameter

Parameter	Data
Packing unit (PCS)	/
NW per piece(g)	/
Layers	1
Number of connections	8
Rated cross section(mm <sup>2</sup> )	22
Color	black
Insulation material	PA
Flame retardant grade ( UL94 )	V0
Rated voltage(V)	660
Rated current(A)	90
Temperature of insulation material	-40 ~ +125
Wire feed	Terminal side

## Product certification

Parameter	Data
Certification logo	
Certification logo	
Certification logo	

Parameter	Data
	
Certification logo	

## Technical data

Parameter	Data
Connection Method	Screw connection
Screw thread	M6 × 14
Stripping length(mm)	/
Tightening torque	4-5
Solid conductors(mm <sup>2</sup> )	5.5-22
Solid conductors AWG	10-4
Stranded conductors(mm <sup>2</sup> )	5.5-22
Stranded conductors AWG	10-4
Operating temperature ( )	-40 ~ +105
Ambient temperature (storage/transportation) ( )	-25 ~ +60
Relative humidity	30% ~ 90%
Connection in acc. with standard	IEC 60947-7-1

## Dimension

Parameter	Data
Width(mm)	54
Thickness(mm)	63
Height(mm)	41