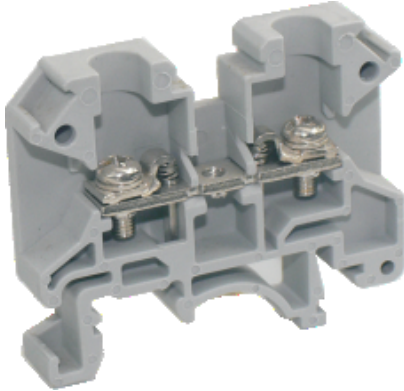


Barrier screw terminal block-  
UBJ-1.5-061001




Barrier screw terminal block , rated voltage:660V ,  
Max. operating current:17.5A, connection  
method : screw connection , number of  
connections : 2 , crimping  
range : 0.75mm<sup>2</sup> -1.5mm<sup>2</sup> , AWG : 18-16 , t  
hickness : 7.5mm , height:37mm , color : Grey  
 , mounting  
type : TH35-7.5、 TH35-15、 G32-15、 G32-18

Product parameter

Parameter	Data
Packing unit (PCS)	/
NW per piece(g)	/
Layers	1
Number of connections	2
Rated cross section(mm <sup>2</sup> )	1.5
Color	grey
Insulation material	PA
Flame retardant grade ( UL94 )	V0
Rated voltage(V)	660
Rated current(A)	17.5
Temperature of insulation material	-40 ~ +125
Wire feed	Terminal side

Product certification

Parameter	Data
Certification logo	

Technical data

Parameter	Data
c	Screw connection

Parameter	Data
Screw thread	M3
Stripping length(mm)	8
Tightening torque	0.5-0.7
Solid conductors(mm <sup>2</sup> )	0.75-1.5
Solid conductors AWG	18-16
Stranded conductors(mm <sup>2</sup> )	0.75-1.5
Stranded conductors AWG	18-16
Operating temperature ( )	-40 ~ +105
Ambient temperature (storage/transportation) ( )	-25 ~ +60
Relative humidity	30% ~ 90%
Connection in acc. with standard	IEC 60947-7-1

## Dimension

Parameter	Data
Width(mm)	46
Thickness(mm)	7.5
Height(mm)	37