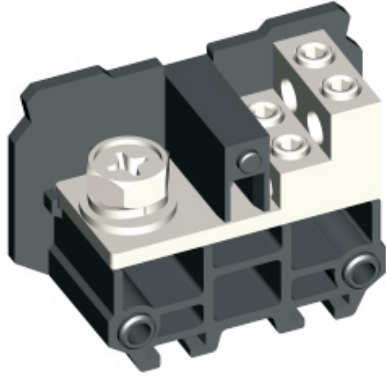


Barrier screw terminal block-
UTD-150I / 4 × 16-391322





Barrier screw terminal block , rated voltage:660V ,
Max. operating current:175A, connection
method : screw connection , number of
connections : 5 , crimping
range : 22mm² -60mm² , AWG : 4-1/0 , thick
ness : 27 × Nmm , height:45mm , color : Black
, mounting
type : TH35-7.5、 TH35-15、 G32-15、 G32-18

Product parameter

Parameter	Data
Packing unit (PCS)	/
NW per piece(g)	/
Layers	1
Number of connections	5
Rated cross section(mm ²)	60
Color	black
Insulation material	PA
Flame retardant grade (UL94)	V0
Rated voltage(V)	660
Rated current(A)	175
Temperature of insulation material	-40 ~ +125
Wire feed	Terminal side

Product certification

Parameter	Data
Certification logo	
Certification logo	

Technical data

Parameter	Data
Connection Method	Screw connection
Screw thread	M8 × 14 (Cross-groove bolts)
Stripping length(mm)	/
Tightening torque	8-10
Solid conductors(mm ²)	22-60
Solid conductors AWG	4-1/0
Stranded conductors(mm ²)	4-16
Stranded conductors AWG	4-1/0
Operating temperature ()	-40 ~ +105
Ambient temperature (storage/transportation) ()	-25 ~ +60
Relative humidity	30% ~ 90%
Connection in acc. with standard	IEC 60947-7-1

Dimension

Parameter	Data
Width(mm)	72
Thickness(mm)	27 × N
Height(mm)	45